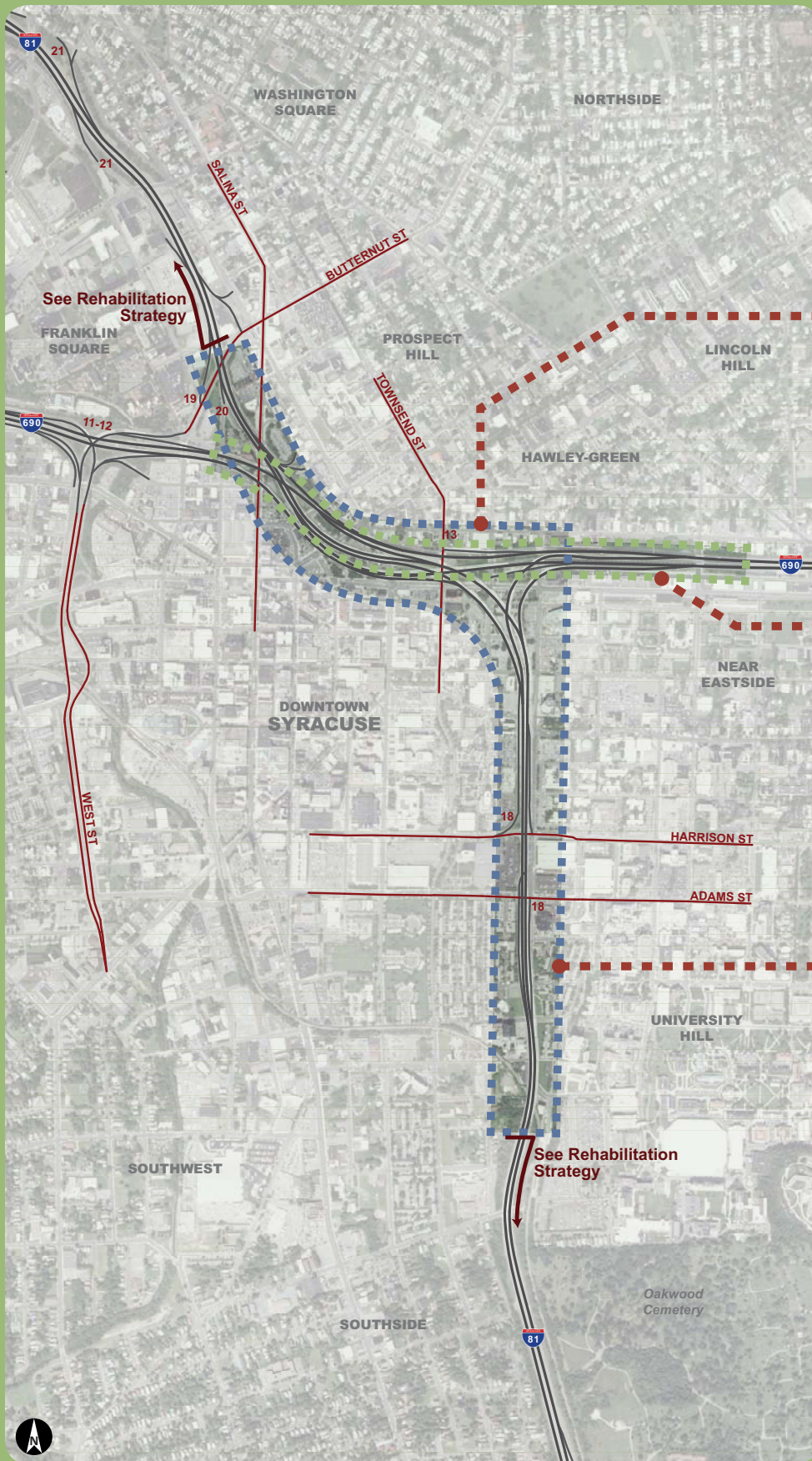


# Tunnel/Depressed Highway strategy: Elements of Stage 1 development



## I-81/I-690 INTERCHANGE

- Re-establish all connections between I-81 and I-690
- Provide primary access to downtown and University Hill

## I-690: CROUSE AVE TO WILLOW ST

- Investigate tunnel concepts from Crouse Ave to Willow St

## I-81: NYS&W RAILROAD TO BUTTERNUT ST

- Investigate and develop 5 tunnel/depressed highway concepts for I-81 from the NYS&W railroad to Butternut St

## NORTHERN & SOUTHERN BOULEVARD LIMITS

Review other terminus suggestions including:

- City of Syracuse north city line
- I-90 (Thruway) interchange (Exit 25A)
- Castle St (tunnel and depressed highway)
- Colvin St (tunnel)
- Oakwood Cemetery (depressed highway)