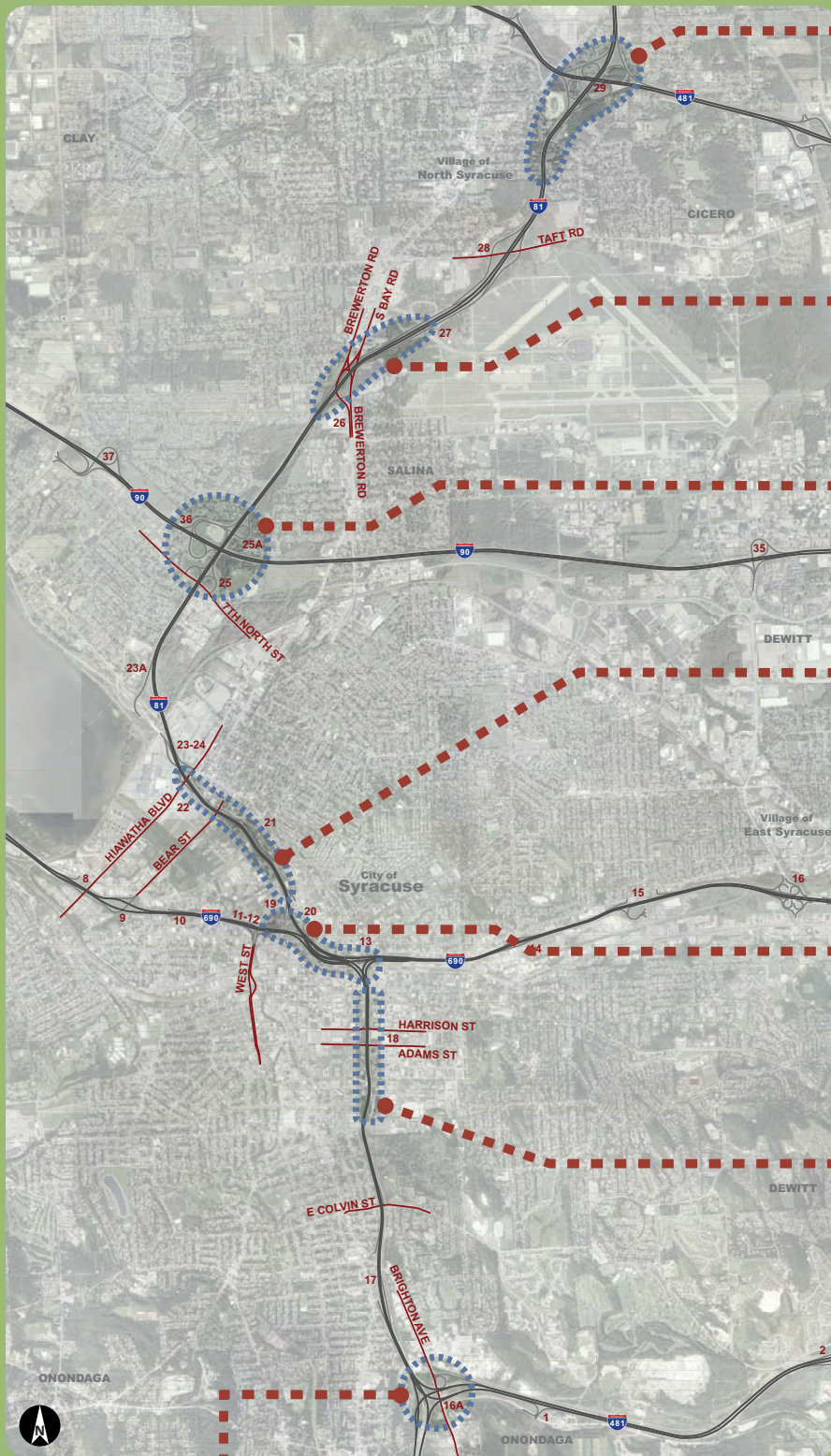


Rehabilitation strategy: Elements for Stage 1 development



TAFT RD TO I-481

- Develop frontage road for I-81 through the interchange with I-481 to improve weaving conditions
- Review accident history for the Priority Investigation Location to determine if mainline curve contributes to high accident rate

ROUTE 11 AREA (EXIT 26 & 27)

- Review accident history for two Priority Investigation Locations to determine if mainline curve or weaving contributes to high accident rate

7TH NORTH ST TO I-90

- Develop frontage road system to improve weaving conditions
- Provide shoulder-edge rumble strips

I-690 TO HIAWATHA BLVD

- Increase length of ramps
 1. State St to I-81 northbound
 2. Court St to I-81 northbound
 3. I-81 southbound to Genant St
- Remove on-ramp from Genant St to I-81 southbound
- Provide shoulder-edge rumble strips

I-81/I-690 INTERCHANGE

- Increase length of ramps
 1. I-690 eastbound to I-81 southbound
 2. Pearl St ramp to I-81 northbound
 3. I-81 northbound to I-690 westbound

VIADUCT AREA

- Increase length of three of four ramps
 1. Harrison St to I-81 northbound
 2. I-81 southbound to Harrison/Almond
 3. Adams/Almond St to I-81 northbound
- Widen bridge southbound to provide two lanes for southbound ramp to Harrison St
- Improve capacity on Almond St

I-81/I-690 INTERCHANGE & VIADUCT AREA

- Widen bridges to provide shoulders
- Provide skid-resistant pavement
- Provide reflectorized pavement markings
- Provide shoulder-edge rumble strips

I-81/I-481 INTERCHANGE

- Improve interchange lighting
- Provide reflectorized pavement markings
- Provide shoulder-edge rumble strips