

Public involvement for The I-81 Challenge

Throughout *The I-81 Challenge*, community input will help guide the development and refinement of options for the future of I-81. The SMTC and the NYSDOT have used a wide variety of tools and techniques to disseminate information and facilitate input into *The I-81 Challenge* process.



EDUCATION AND INFORMATIONAL MATERIALS

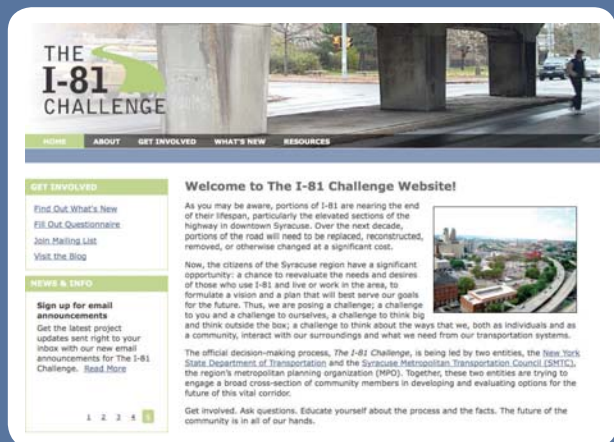
- Fact sheets and newsletters
- Website and social media
- Educational videos

STUDY COMMITTEES

- Study Advisory Committee
- Community Liaison Committee
- Municipal Liaison Committee

ELECTED OFFICIAL OUTREACH

- Notification to local, state, and federal elected officials



FALL 2011 NEWSLETTER



What's been happening with The I-81 Challenge?

The study team has been busy over the past several months. As you'll see from the focus of this newsletter, preparing for, conducting, and summarizing our May public workshops has been a major part of our work, but that is not all we have been doing. We convened our first Community and Municipal Liaison Committee meetings, where we received feedback from community organizations and municipalities about the progress of the I-81 Challenge. We also completed our second questionnaire. We've continued to update our website, blog, and Facebook page with new information about the I-81 Challenge, as well as adding relevant articles about similar projects in other cities.



Syracuse Metropolitan Transportation Council



New York State Department of Transportation

What is The I-81 Challenge?

You have probably read or heard that portions of I-81, particularly the elevated sections of the highway in downtown Syracuse, are nearing the end of their lifespan. Over the coming decades, portions of the highway will need to be replaced, reconstructed, removed, or otherwise changed.

The New York State Department of Transportation (NYSDOT), the Syracuse Metropolitan Transportation Council (SMTC), and a Study Advisory Committee (SAC) have begun a process to engage a broad cross section of community members in identifying, developing, and evaluating options for the future of this vital corridor. Over the next several years, this process, known as The I-81 Challenge, will advance community discussions about the future of I-81.

Using the community's input, along with information about the highway's existing conditions, a wide range of options for the future of I-81 and a set of goals and objectives are being generated. This broad range of options will be narrowed down to a small number of viable options through a combination of technical analysis and continued public involvement. The viable options will ultimately be refined and analyzed in further detail, and a formal environmental review process will begin. That process will lead to a decision, and to a project or projects that can be implemented. It takes time to make a decision of this importance, and we need the public to stay involved every step of the way. Visit www.thei81challenge.org to find out how you can stay informed of project updates.

LIMITED ENGLISH PROFICIENCY AND ENVIRONMENTAL JUSTICE OUTREACH

- Translation and interpreters
- Targeted outreach

