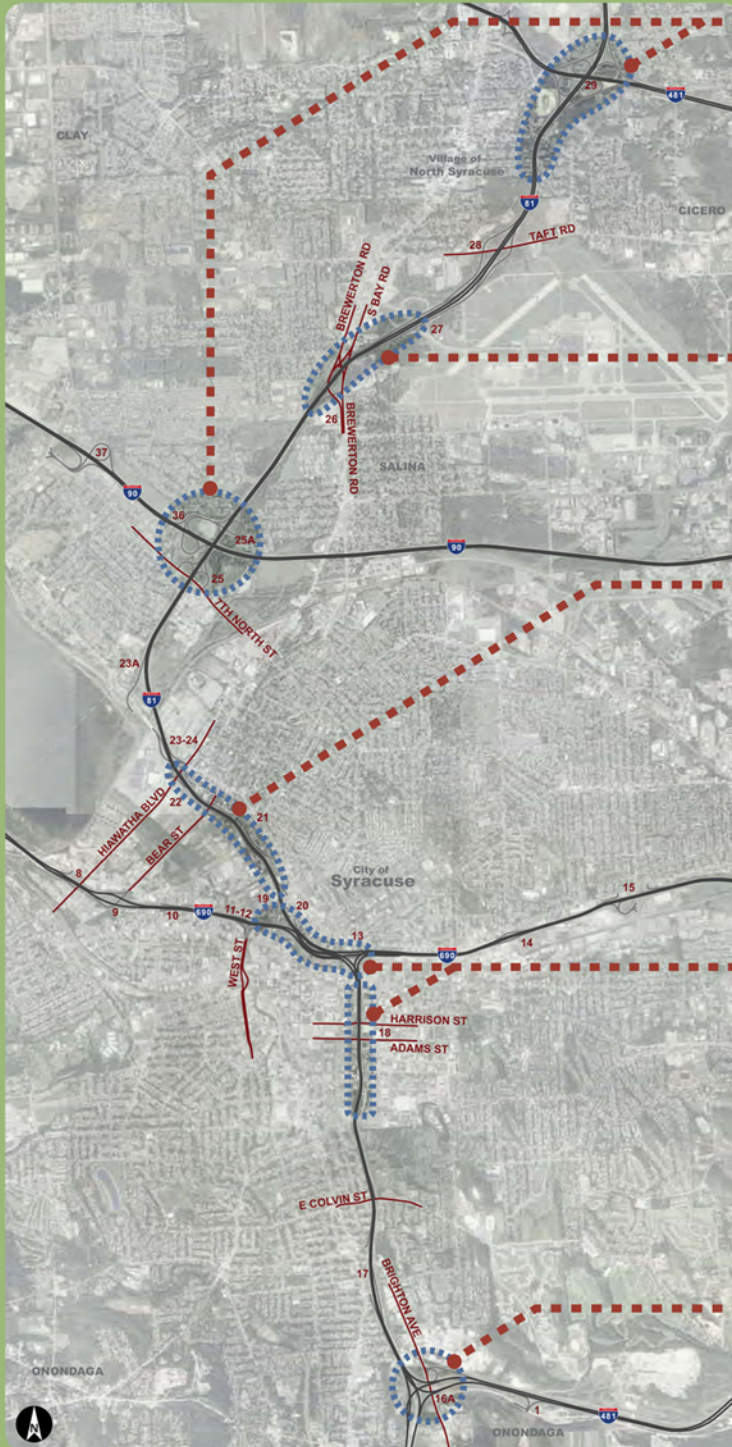


No-Build strategy:

Future issues



7TH NORTH ST TO I-90 & TAFT RD TO I-481

- Capacity conditions and congestion will increase
- Safety and accident occurrences will remain, if not increase as a result of increasing congestion
- Non-standard design features will continue to affect capacity and safety

ROUTE 11 AREA (EXIT 26 & 27)

- Traffic capacity will decrease from good to approaching capacity and will likely contribute to increased accident rates

I-690 TO HIAWATHA BLVD

- Capacity conditions and congestion will increase
- Safety and accident occurrences will remain, if not increase, as a result of increasing congestion
- Non-standard design features will continue to affect capacity, safety, and operations

I-81/I-690 INTERCHANGE & VIADUCT AREA

- Bridge conditions continue to deteriorate and require increased funding for out-of-date bridges
- Capacity conditions and congestion will increase
- Safety and accident occurrences will remain, if not increase, as a result of increasing congestion
- Non-standard design features will continue to affect capacity, safety, and operations

I-81/I-481 INTERCHANGE

- Safety and accident occurrences will remain, if not increase, as a result of increasing congestion
- Non-standard design features will continue to affect capacity and safety