

# Population & employment

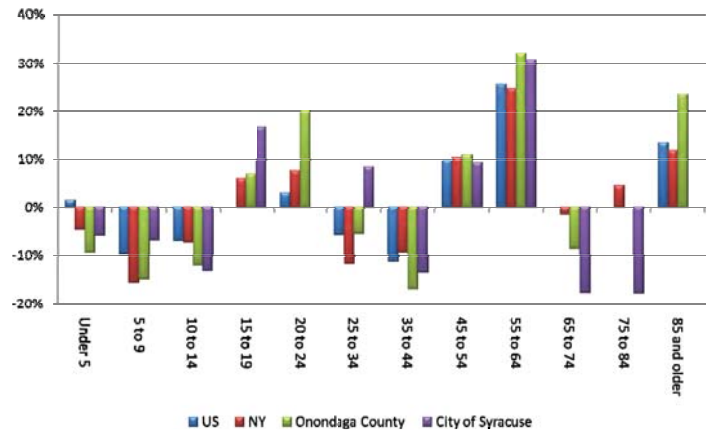
## POPULATION

- The overall City of Syracuse and Onondaga County population has declined steadily since 1990
- Between 1980 and 2000, upstate New York lost roughly 20% of people aged 20 to 34
- The largest increase in population for City of Syracuse is among 55 to 64 year olds, up 30.8% since 2000, reflecting the large baby boom population entering this age bracket
- 30% of City of Syracuse's population is under 19 years old

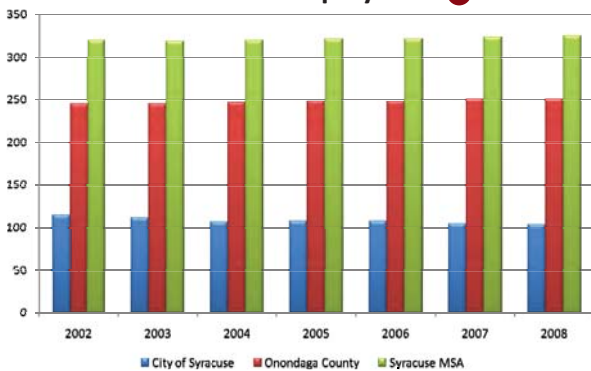
### Population

	1990	2000	2008	% Growth from 1990 to 2008
United States	248,709,873	281,421,906	304,374,846	22.4%
New York State	17,990,455	18,976,457	19,541,453	8.6%
Onondaga County	468,973	458,336	452,633	-3.5%
City of Syracuse	163,860	147,306	138,068	-15.7%

## Population Change by Age



## Total Employees



## TOTAL EMPLOYEES

- Total employment in the City of Syracuse has decreased 9.6% between 2002 and 2008, from 114,134 to 103,227
- More than 94% of Onondaga County's working residents also work in the county



## PERCENT OF EMPLOYMENT BY INDUSTRY

- Education and health sector represents 43.2% of total employment in Syracuse, or 44,590 employees
- Syracuse University and the State University of New York (SUNY) Upstate Medical University, employ more than 12,300 people

## Percent of Employment by Industry 2008

