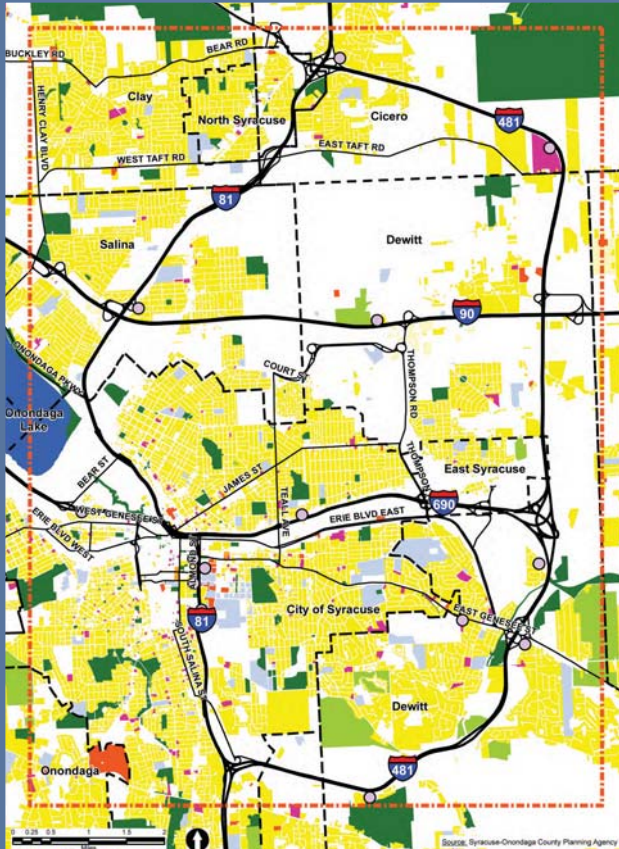


Noise & air quality

NOISE SENSITIVE RECEPTORS



Interstate 81 Corridor Assessment

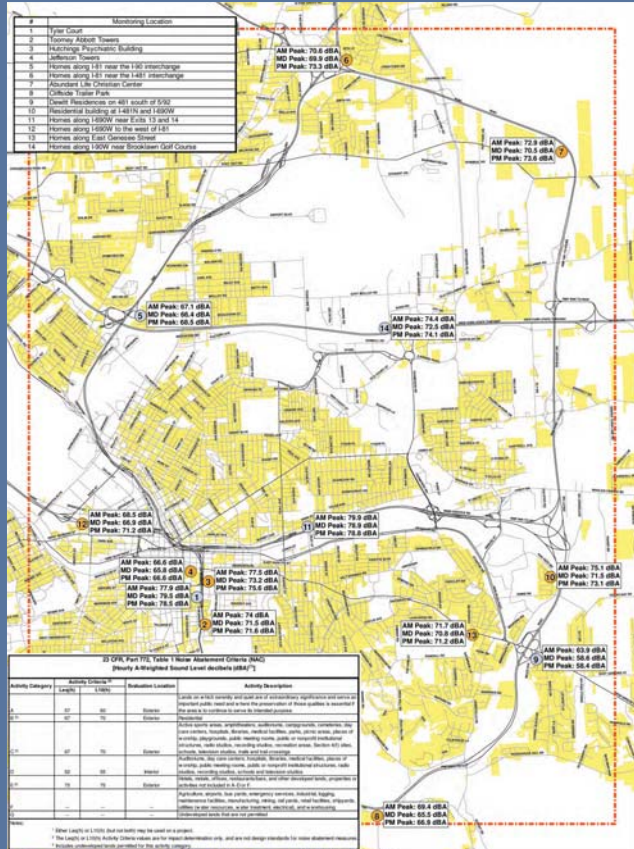
Noise - Sensitive Receptors

Legend

- SEE Study Area
- Municipal Boundary
- Noise Monitoring Locations
- Residential
- Residential - Transient
- Educational Facilities
- Healthcare Facilities
- Religious Facilities
- Indoor Entertainment/Congregation
- Active Outdoor Sports Areas
- Parks

Source: Syracuse-Onondaga County Planning Agency

EXISTING NOISE MEASUREMENTS



Interstate 81 Corridor Assessment

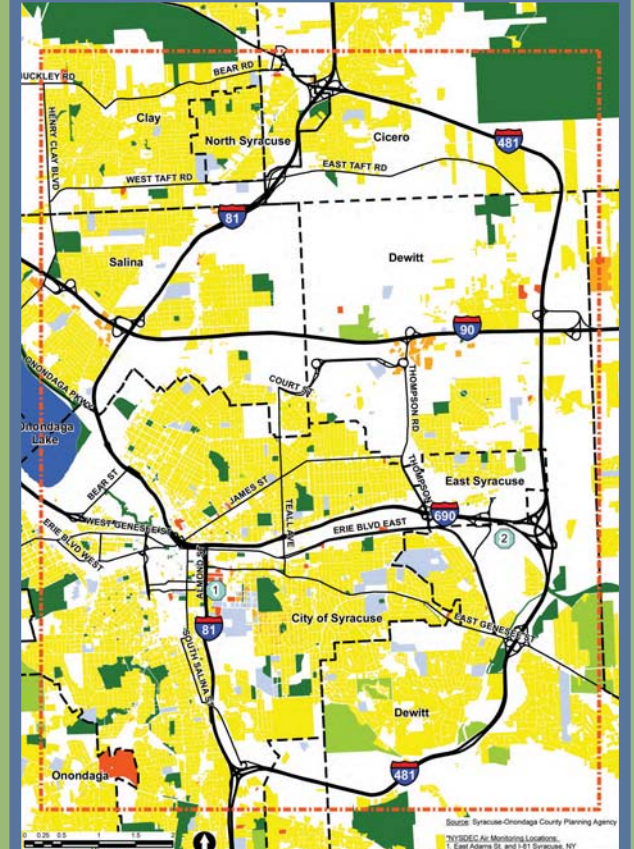
Existing Noise Measurements

Legend

- Study Area
- Residential Land Use
- Long Term Noise Monitoring Locations (24-hr.)
- Short Term Noise Monitoring Locations (20-min.)

Source: Syracuse-Onondaga County Planning Agency

AIR QUALITY SENSITIVE RECEPTORS



Interstate 81 Corridor Assessment

Air Quality - Sensitive Receptors

Legend

- SEE Study Area
- Municipal Boundary
- NYSDEC Air Monitoring Locations
- Residential
- Residential - Transient
- Educational Facilities
- Healthcare Facilities
- Active Outdoor Sports Areas
- Parks

Source: Syracuse-Onondaga County Planning Agency

NYSDEC Air Monitoring Locations:
 1. East Adams St. and I-190, Syracuse, NY
 2. SBS Enterprise Parkway, Syracuse, NY